

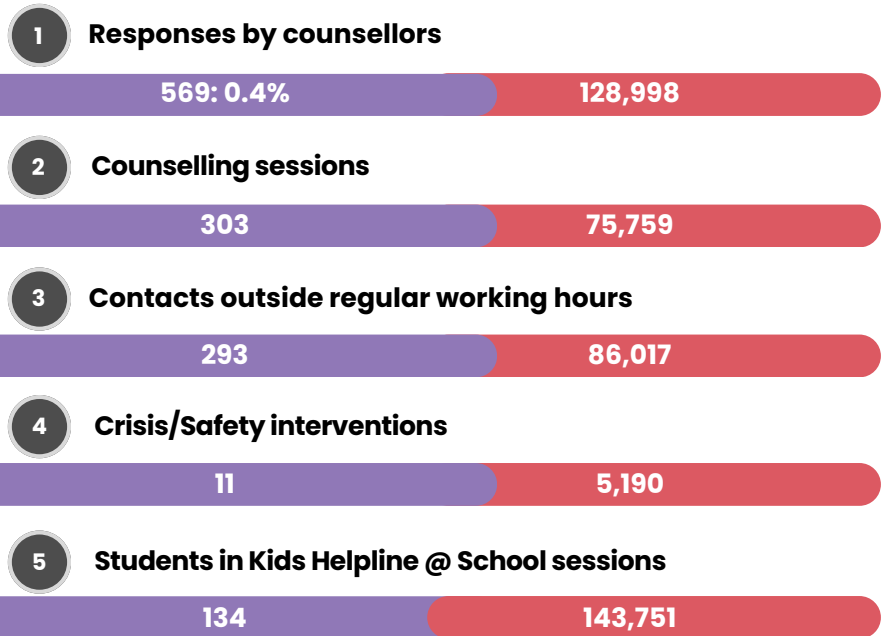
# NORTHERN TERRITORY

## our impact

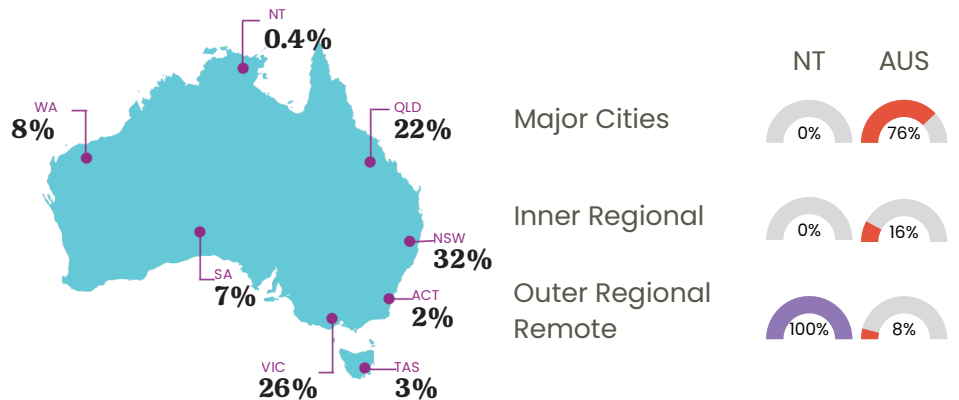
2025



### NORTHERN TERRITORY AUSTRALIA



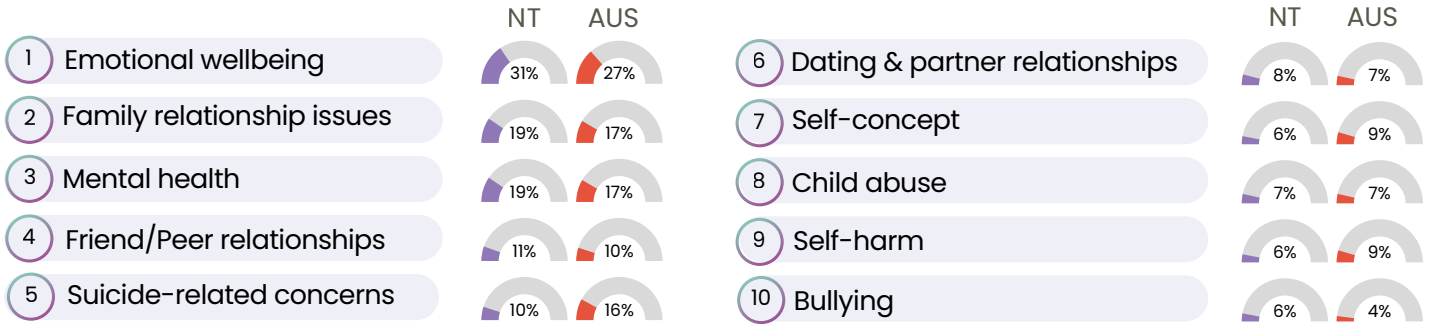
## geographic distribution



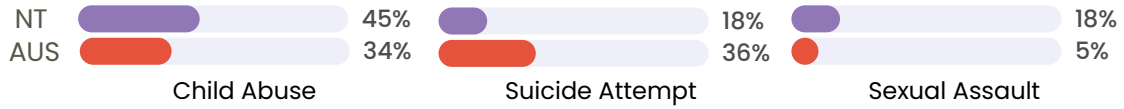
all numbers are rounded to whole units

# Kids Helpline's impact in Northern Territory

## top concerns for young people

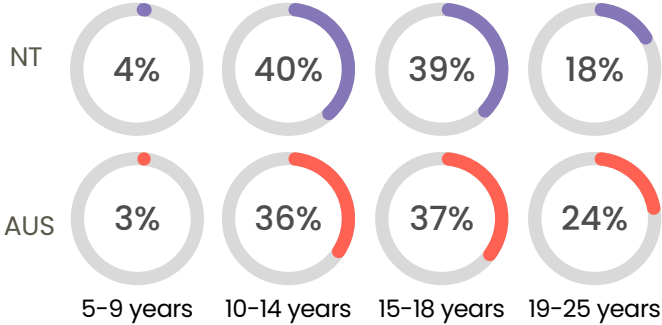


## top crisis response contacts

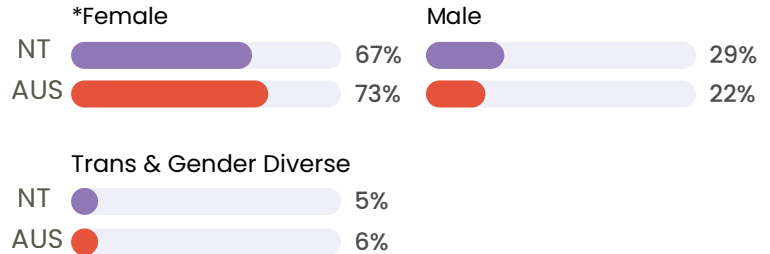


Crisis responses include contacts where counsellors engage with external services (e.g. police, ambulance, domestic and family services, homeless shelters etc.) to assist young people who have experienced harm or who they believe are at risk of harm.

## ages of young people we helped

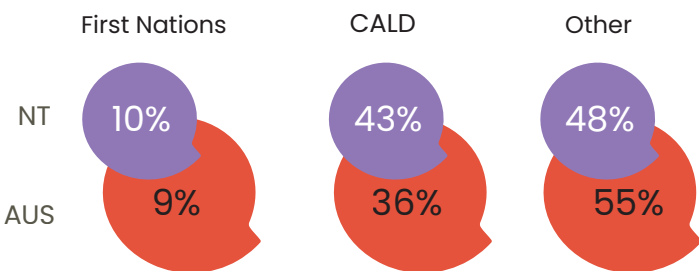


## gender identification

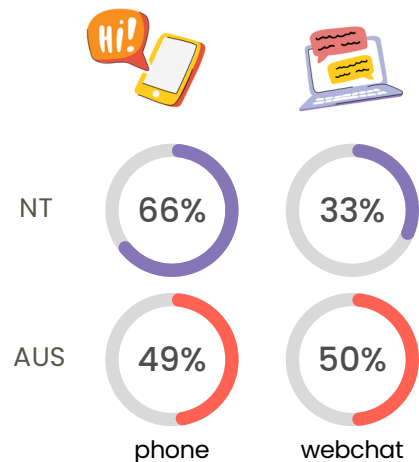


\*It should be noted that Kids Helpline data strongly indicates that females are more likely to reach out for help and this may not necessarily reflect that more females are experiencing crisis.

## cultural background



## how young people reach out



all numbers are rounded to whole units

\*1% other